

# OC Streetcar Project



Jim Hecht, HDR, OC Streetcar Program Management Consultant,  
jim.hecht@hdrinc.com

1

# OC Streetcar Project



- First modern urban rail transit project in Orange County
- 4.1 mile, modern streetcar, from SARTC to Harbor/Westminster
- 8 vehicles, 10/15 minute headways, 10 stops in each direction
- Advertise for construction in about one month, scheduled to open Dec 2020
- How did we get here?

## What is a Modern Streetcar?



## Measure M2



- 2006 half-cent sales tax measure
- Improvements to Metrolink
- Transit Extensions to Metrolink

Orange County Transit Projects



- ① High Frequency Metrolink Service (existing not new stations)
- ② Transit Extensions to Metrolink
- ③ Metrolink Gateways (not mapped)
- ④ Expand Mobility Choices for Seniors and Persons with Disabilities (countywide, not mapped)
- ⑤ Community Based Transit/Circulators (countywide, not mapped)
- ⑥ Safe Transit Stops (countywide, not mapped)

page 23  
page 23  
page 24  
page 24  
page 25  
page 25

## Go Local/Project S

### *Santa Ana & Garden Grove Connect!*

*Extending the reach of Metrolink to the east and west through a multi-modal transportation corridor*



### **Santa Ana & Garden Grove Go Local Project Concept Step 1 Final Report**

Prepared for:  
Orange County Transportation Authority (OCTA)

Submitted by:  
City of Santa Ana  
City of Garden Grove

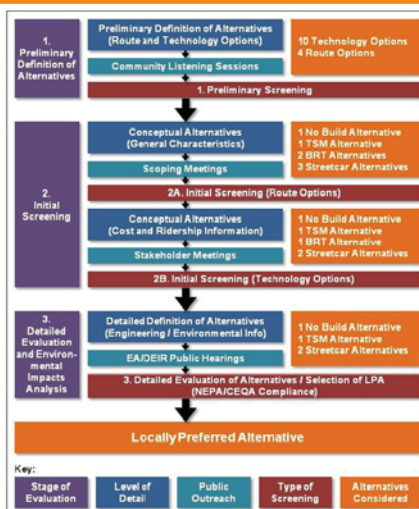
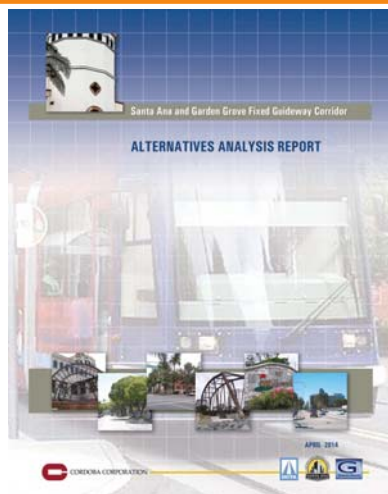
March 2008



- Local agencies were invited to submit proposals to OCTA for improved transit service to Metrolink Stations
- Winners were awarded funding for planning studies
- Cities of Santa Ana and Garden Grove were successful

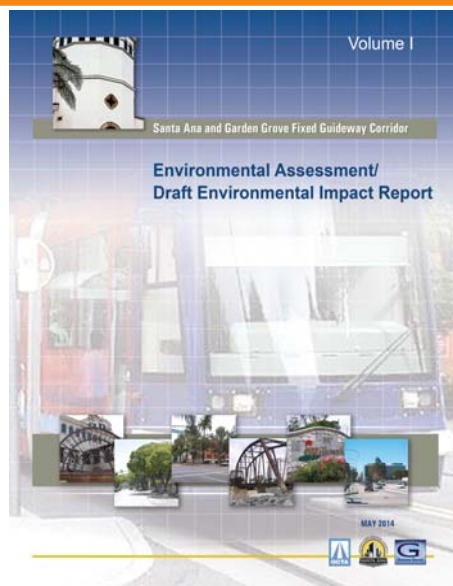
5

## Alternatives Analysis



6

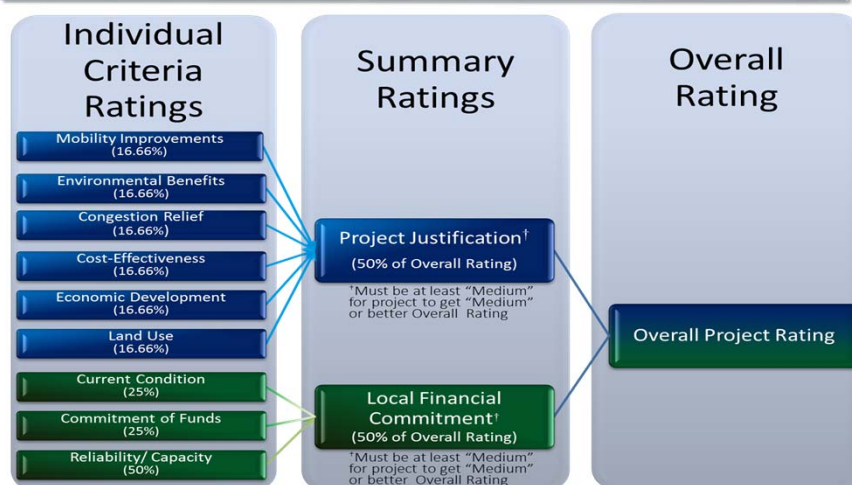
# Environmental Documents



7

## FTA Capital Investment Grant (New Starts)

### New and Small Starts Project Evaluation and Rating under MAP-21



8

## Value Engineering/Risk Assessment

### Changes to Track Layout

Environmental  
Document

Revised



9

## Changed Bridge Type Westminster



Before

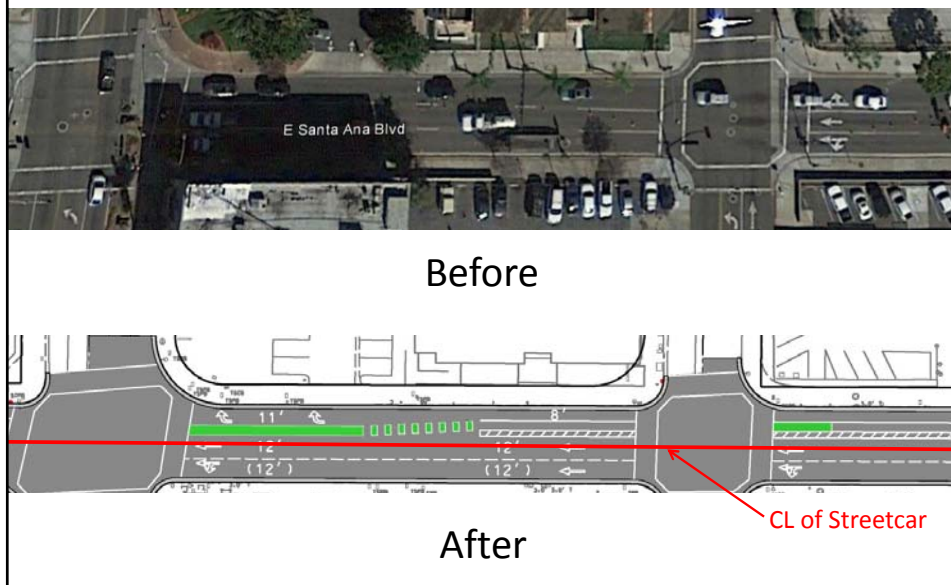


After

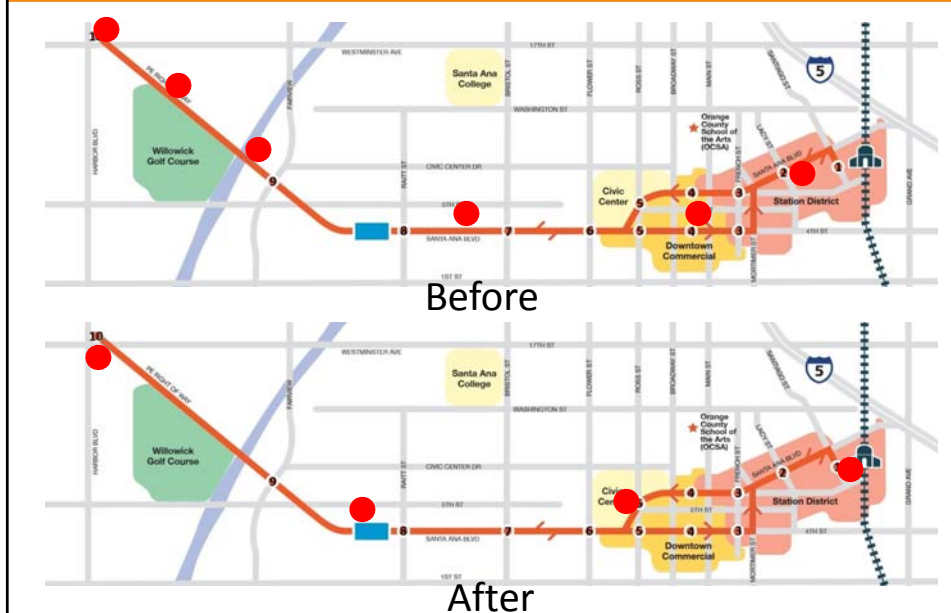
10



## Road Reconfiguration



## Traction Power Substation Locations



# Station Design



13

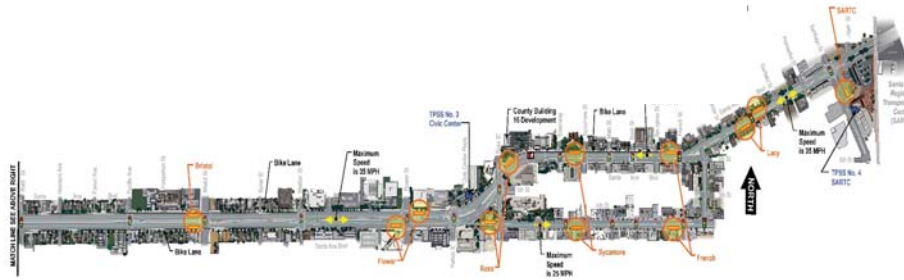
## Modifications to 4<sup>th</sup> Street







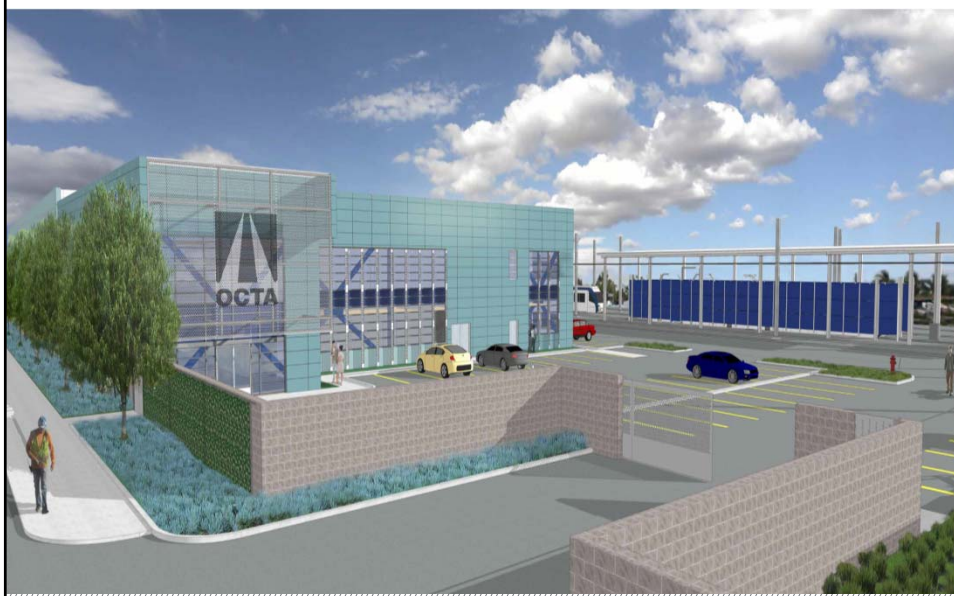
## Street Running (East of Raitt St)



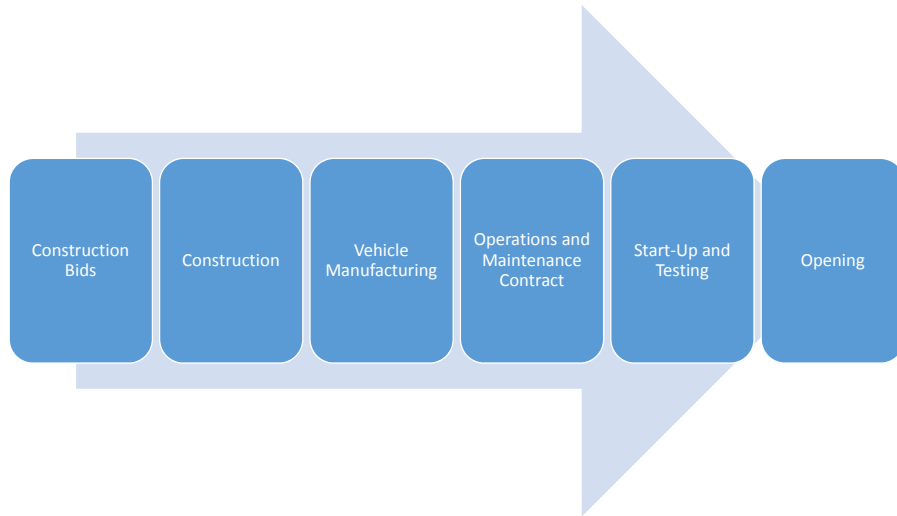
- WB: Santa Ana Blvd; EB: Sasser Park, 4<sup>th</sup> Street, Mortimer Street
- Ross Street ByPass
- Embedded Block Rail
- Single Contact Wire plus underground feeder
- New and Modified Traffic Signals, City Bike Lane

17

## Maintenance and Storage Facility



## What's Left?



19

## Questions?



## Thank You!



[octa.net/OCStreetcar.com](http://octa.net/OCStreetcar.com)



(844) 7Go-OCSC or (844) 746-6272  
(714) 560-5374 – Tresa Oliveri  
Community Relations Officer



[OCstreetcar@octa.com](mailto:OCstreetcar@octa.com)



[Facebook.com/OCstreetcar](https://www.facebook.com/OCstreetcar)



[@OCstreetcar](https://twitter.com/OCstreetcar)